

Regular Groups:

Women's Bible Study Group: Mondays 10am - 12pm. Bible Study & Prayer @ Glenda's home in Massey. Contact Glenda 022 647 0021



Second Chance Op Shop: Tuesdays 10am–2pm in the Café. Quality clothing & household items for sale. Contact Jill or the Church office

The Op Shop Café: Tuesdays 10am - 12pm in the Café. Friendship & morning tea. Contact Elizabeth 832 2259 or Myra 021 172 0546



Ranui Toy Lending Library: Tuesdays 11am-1pm (fortnightly). Hire toys - School term only. Contact Janet Kidd or the Church office.

Intercessors: Wednesdays 9:30-10.45am in the Prayer Room. Pray followed by tea & cake. Contact Rosanne Martin 022 128 4890



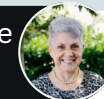
Mainly Music: Thursdays 10am in the Hall. Music, dance & fun for under 5's & their parents. Contact Sarah 021 116 7379

Men's Home Group: Thursdays 7-9pm in the Café. Fellowship, bible Studies & prayer. Contact Tai Taua or John Blight 022 655 8400



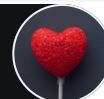
The Thursday Nighters: 7-9pm in the prayer room. Women's prayer, Fellowship, Worship & Bible Study. Contact Ronnie 021 027 07540

Friendship Group: Fridays 10am-12pm in the cafe. Play games & have fun, morning tea provided. Contact Myra Dormer 021 172 0546



Foodbank: Open on Fridays 9:30-11:30am to locally living residents. Donate Items to the trolley. To volunteer contact Elesha

The Prayer Chain: A chain of faithful prayers in our church. For prayer requests contact Marlene 027 848 6948 or Grahame Walker.



Our Staff:



Grahame Walker
Senior Pastor
021 834 077



Tai Taua
Associate Pastor
027 277 2848



Rachel McMahon
Children's Ministry
027 390 6764



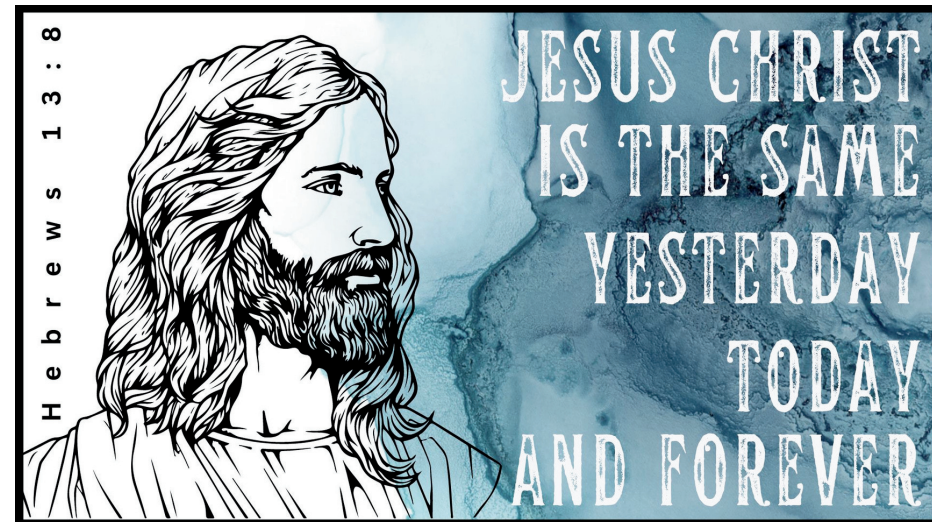
Robert Murray
Office Manager
021 610 252



Sherilyn Sampson
Office Admin
021 298 2762

Elders: Peter Soole, Rob Kidd, Kristen Bettany, John Blight

SUNDAY 6 APRIL 2025



CONTACT US:



Office Hours:
Monday - Friday: 9am - 1pm



admin@ranuibaptist.org.nz



www.ranuibaptist.org.nz



P.O. Box 70040, Ranui, Auckland 0655



(09) 833 7815

We've been in a series on the final week of Jesus, and today we come to an unflinching look at his execution. I am going to be following the work of Pastor James White today. We will look at the crucifixion of Jesus by time. Friday, 3 a.m. to 6 a.m. arrested and beaten. Friday, 6 a.m. to 9 a.m. he was brought to Pontius Pilate; flogged, mocked, and sentenced. Friday, 9 a.m. to 3 p.m. Crucified. Friday, 3 p.m. the death of Jesus.

Crucifixion was the most agonising and humiliating and gruesome death imaginable. We are used to seeing images of Jesus carrying the entire assembled cross, but that's more art than reality. It would have been the crossbeam. And Jesus didn't carry it all the way. According to the biblical record, he had been beaten so badly that he was not able to carry it except for a few staggering steps.

The way crucifixion killed you was through suffocation. You had to push yourself up against the spike in your heels to breathe, and eventually you would tire, and then choke to death. This was so horrific that the word "excruciating" was born. Our word for extreme pain and suffering. "Excruciating" is Latin for "out of the cross." The word didn't exist before.

A Christian, a Christ-follower, a believer, is someone who knows this and enters that love relationship with the living God through Jesus. God has one, primary agenda for this world. It is his love. His forgiving love. His enduring love. His inviting love. The whole reason Jesus came was for people to see and know this love. We deserved to be on that cross. Sinners who needed a Saviour. We must stop watering that down. The cross was the endgame for us, unless somebody stepped in and took our place. Only one kind of God and one kind of love, agape love could do this.

Grahame Walker

Today's message talks vividly on the crucifixion of Jesus & may not be suitable for younger audiences. Please make use of the children's program available in the hall.

**RANUI BAPTIST
YOUTH**
FRIDAY 11 APRIL
6:30PM
FORTNIGHTLY ON FRIDAYS
**BIBLE STUDY & KAI
FOR HIGHSCHOOL STUDENTS**
CONTACT ELLA KAIHAU

**Supporting M.W.B
in Ukraine**
Today from Derek's Kitchen...

- Yellow Limealade
- Orange Marmalade
- Feijoa Chutney (Mild)
- Feijoa Chutney (Medium)
- G.W. Feijapple Chutney (Mild)
- Tomato & Yellow Chilli Chutney (Mild)
- Chipotle Sauce (Medium Hot)
- Tomato-Chilli Medley (Mild)

**\$5+ Donation per jar
(cash or Internet Banking)**

Celebrate Easter with us

**Good Friday
9.30am**

**Easter Sunday
10am**



Weekly Prayer Focus:

- Please pray during the prayer time and the week for the following people and ministries.
- Pray for elders and team leaders
 - Pray for wisdom, unity, discernment, protection and vision
 - Pray for the Family Easter service, pray for people to be saved
 - Pray for the Op shop, the Op shop café, and the food bank

Donations Tax Receipts:

The donations tax receipts have been completed. We have emailed copies to those who have email addresses listed. Those who requested printed copies can collect these from the office during the week or from Robert Murray in the foyer on a Sunday morning. If you have not received your donations tax receipt, please get in touch with the office! admin@ranuibaptist.org.nz

NEXT WEEK: 10am - Peter Schultz
Visiting Speaker from Pioneers
(Children's Church On!)



Door Greeters:
 Heather & Maggie
Notices:
 Rob Kidd



Door Greeters:
 Ako & Lesley
Notices:
 John Blight