

Parenting Tip:

Teaching children to resource themselves

Smart parents know that they don't have all the answers! It's healthy for children to know that they have lots of options when it comes to a tricky question or a problem they can't solve on their own.

"I actually don't know – let's find out!" is a great line to use. When you check out the library or internet together, or seek out others with the knowledge or expertise you need, your child absorbs the message that someone, somewhere, can help me with this. When they're older and more independent, you'll be glad to know that they're skilled at finding the people and resources they need to cope with challenges in their lives.

The Way of the Master - Relive the Emotions

Do you ever consider the *reason* for your coming to the Saviour? Was there a thorough knowledge of sin? Where did it come from? Try to relive the emotions of the day of your conversion. Did the Law condemn you? Did it send you to the cross? What part did your conscience play in your salvation? Did it suddenly come alive, or had it been speaking to you for some time? What do you think was your greatest sin? Were you afraid of God? Was there a knowledge of future punishment? Most of all, *think of what would have happened to you if you had died in your sins*. Then express your gratitude to God for that cross, where His great love was poured out for you, and let it motivate you to do His will and reach the lost. There goes another minute. Gone *forever*. Go share your faith while you still have time.

Sermon Notes

Normal office hours are 9am to 1pm Monday to Friday.
Ph: 833-7815 Email: ranuibaptist@extra.co.nz
P.O. Box 70040, Ranui, Waitakere 0655
Fax: 832-5231 www.ranuibaptist.org.nz
Pastor : Russell Watts
Associate Pastor: Tai Taua
Youth Pastors: Michael Liufau
Agnes Liufau
Elders: Graham Davis, Carol Dawson, Peter Soole, Graeme Stewart & Glenda Winn.
Office Manager: Carole Soole (Monday to Thursday)
Robert Murray (Friday)

WELCOME TO
Ranui Baptist Church
"Where people matter"
Sunday 5 February 2012



10am: Pastor Russell
"Faith at Home - When Faith Gets Tested"



**Communion today for those that
love the Lord.**

**Next Sunday 12 February we start our two morning
Services (9am & 11am) and 6pm service.**

Next Sunday 12 February

9am: Matthew 18

11am: Matthew 18

**6pm: Healing Meeting and Triple P service (Prayer,
Praise, Prophecy). Dedication of Zario Demeterovi**

If you are visiting with us today - **WELCOME**. We'd love to get to know you and answer any questions you have. Seek out a host (wearing lanyard) or a friendly person after the service.

For further study in families / small groups

Mixer: (Be sensitive/ respectful to where the kids are at. To them being embarrassed in front of the class may feel as bad to them as your tussle with cancer).

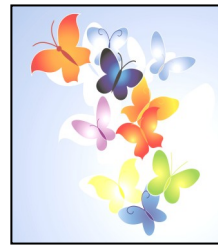
Question: *What was the hardest experience you have ever had in life?*

1. *What did you like about the story of Shadrach, Meshach and Abednego?*
2. Life is not always fair! We will all go through hard times where we get to choose our reactions. *What does God think is the most important thing that we each have?*
1 Peter 4:7 or James 1:12.
3. If God loves us, shouldn't he stop us going through trials?
4. *What are the three things that happen when we go through trials? Our _____ are burnt off. And we are set free to see what is really important. We are able to _____ Jesus more clearly. Others begin to believe because of how they see us _____ with God.*
5. Shadrach, Meshach and Abednego had faith that God could protect them from the fire. Faith comes from hearing the Word. Consider how Psalm 66 and Isaiah 43:2 would have helped.
6. Have you like these three come into a greater liberty after a trial, perceived Jesus most clearly in a trial or had someone open their hearts to the Lord because of how they saw you walk with Jesus during a trial?
7. *How is the little hen that saved her chicks in the barn like Jesus and us?*
8. *Shadrach, Meshach and Abednego maybe could have bowed down to the idol and said; "well old Nebi's been good to us so lets keep the old boy happy" or "I am only bowing down on the inside" or "I will just confess my sin later" 1 John 1:9. If people were putting down, mocking Christianity (at school/ college/ university/ work) and you were asked in front of a whole lot of these people if you were a Christian what would you say? Would you close your eyes and say a prayer before eating a meal with them?*
9. If you feel you are in a season of testing share what is happening with your group. Don't ask them to pray that you will get out of the trial or control it so it is managed by you but ask them to pray that God would set you free (to see what is really important), that you would experience the Lord in the situation and that pre-Christians will believe because of how you are walking by faith.

The Journey of the Butterfly

Change, Growth, Transformation.

TERMS 1 & 2 2012



WHEN?- Friday afternoons

TERM 1: 17 Feb – 30 Mar (7 weeks)

TERM 2: 23 Apr – 29 June (10 weeks)

Ranui Baptist Church 464 Swanson Road, Ranui

12.30 – 2.30 p.m. - Childcare provided on request

WHO IS THE GROUP FOR? WOMEN:

- Who are dealing with the impact of family violence in or out of the relationship
- Who want to break the cycle of violence and its impact on their children
- Who want to build support, rebuild their lives and work towards positive changes

WHAT YOU CAN EXPECT FROM THE GROUP

Support, safety, confidentiality, respect, information, resources, validation of your experience, being listened to.

TO REGISTER- CONTACT US ON:

Telephone: 09 838 6381 or

Fax: 09 836 2470 or

Email: info@womenscentre.org.nz

SPECIAL MEMBERS MEETING

Notice is given of a special Member's Meeting to look at a neighbouring property opportunity. It will be held on either Monday 13 February at 7.30pm or Sunday 19 February at 12.30pm.

NOTICES:

YOUTH CORNERSTONE

Pastors: Michael or Agnes Liufau,

M02102656269 A0221545153

Cornerstone - Youth meet on Wednesday from 6.30pm-9pm.

We are looking for someone with a passion for youth to serve them supper. See Agnes or Mike.

Son-Shine Club Starts again on Thursday 1 March.

Can you please collect for us small jars no larger than a jam jar.

Also small pinecones, fir cones and other natural objects for children's craft purposes. Thank you. Christine Bartle

Children's Prayer Focus - Monday Nights

Children's prayer will start again on Monday 13 February.

Situations Vacant

In most ministries there will be opportunities to serve. If you have a ministry enquiry on your heart please go and see the relevant team leader (their photos and roles are on foyer (leader's board).

Flower Roster Vacancy

Would you be willing to go on the flower roster once every six weeks? If so please see Glenda 833-4181

Thank you

Maraea, Debbie, Mark and Amanda wish to thank the Church family for their love and support.

RESOURCES FOR PARENTS

Please remember to visit the Church website and make use of the Faith@Home material for your family worship as we encouraged you to do in service last Sunday. We would also like to receive your feedback about the material that is available on the Faith@Home website and also anything you wish to share as you have used this material in your family worship times. Please email these to Robert Murray. His email address is: RobertCMurray@xtra.co.nz

NEW WEBSITE DEVELOPMENTS:

Home Group Leaders please note: A new page has been set up under the "Sermons" section of the website where the Home Group Study Guides based on each week's sermon are stored. You may print these for your home group along with the transcript of the sermon which is on the "Sermons" page. The files are in pdf format so you will need an Adobe Acrobat Reader to open these files.

Further developments will be made to the website in the next few weeks and we will keep you informed about these as they happen.

